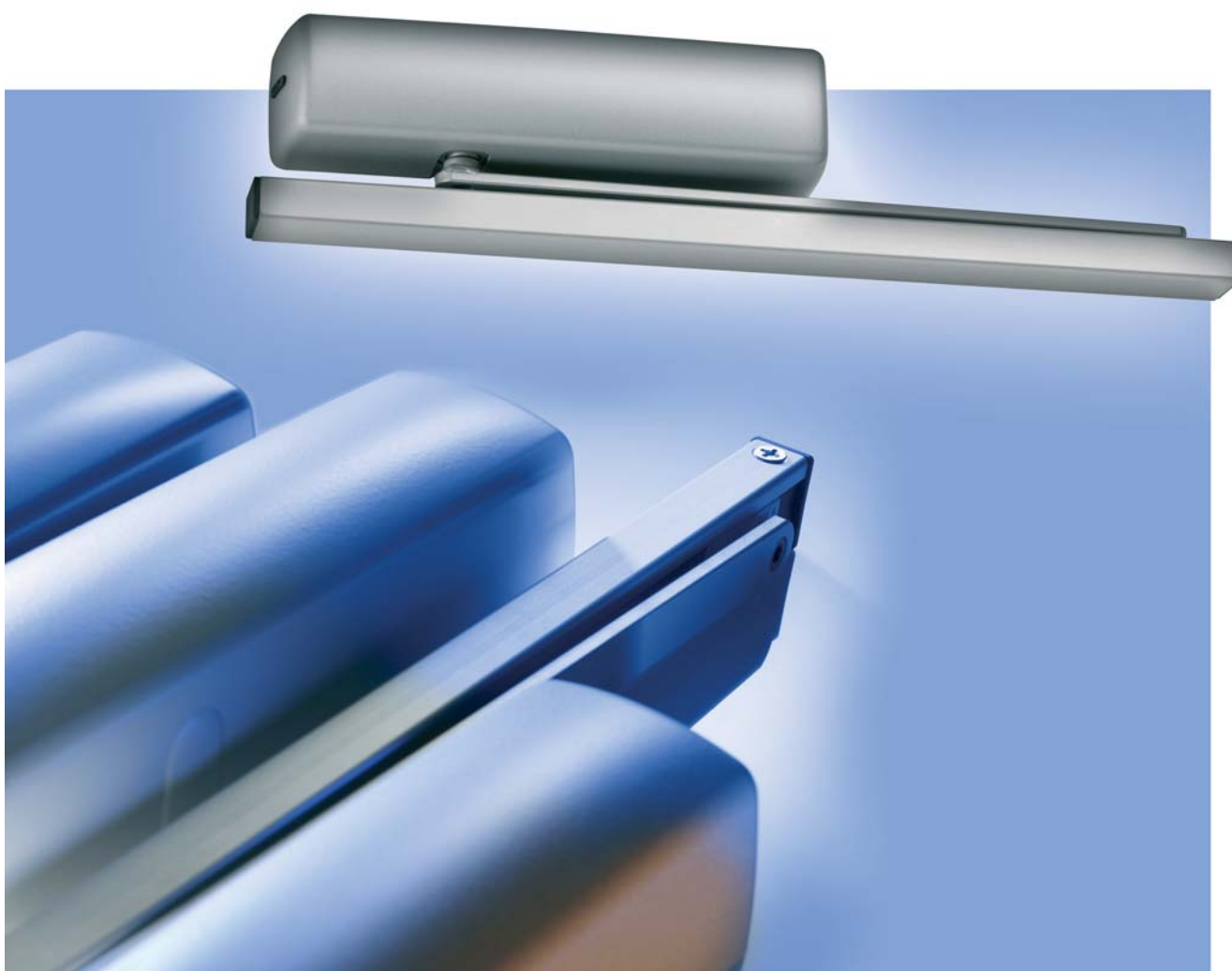


ABLOY® DC330 DOOR CLOSER WITH SLIDING ARM



ABLOY® DC330 is a high quality cam door closer which offers light opening even for heavy doors.

NEW CAM DOOR CLOSER **ABLOY®** DC330



ABLOY® DC330 has been developed to meet the exacting performance requirements of the EN1154 standard. It is an aesthetically modern and elegant door closer suitable for both internal and external doors. Thanks to CAM it is light to open but still strong enough to close the door in every situation. **ABLOY®** DC330 can be adjusted to meet the requirements of the light opening resistance, for example the DDA (Disability Discrimination Act) in UK. It's unique features offer solutions for many different door applications.

Colours available

White



Silver



Brass



Brown



Black

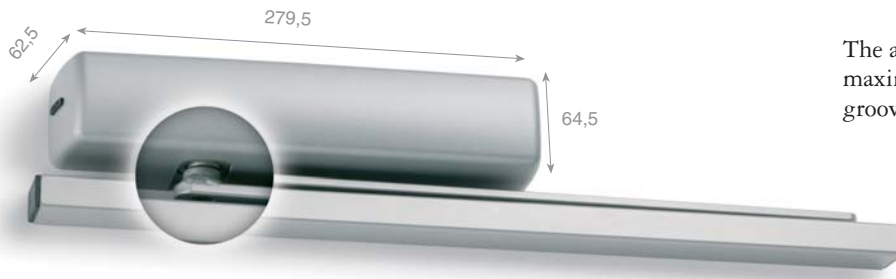


Applications:

- Suitable for exterior and interior doors.
- Recommended maximum door leaf width 1100 mm.
- Recommended maximum door leaf weight 80 kg.

Features:

- CE-certified.
- Cast aluminium body manufactured from High-Performance silicon alloy.
- Uniform design to all **ABLOY®** door closers.
- Very high efficiency.
- Operating temperature range: - 15°C ... + 45°.
- Separate adjustable closing and latching speed.
- Pressure relief valves to protect against abuse.
- Non handed, can be installed on either the door or the door frame.
- Easily adjustable arm height makes installation simple and quick.
- Adjustable spring power from size EN 1 to 4.
- Removable plastic cover in several colours: Silver, brown, brass, black and white. Other colours available upon request.
- Available also with removable stainless steel cover.
- Designed to operate with DC193 or DC194 sliding arms.
- Width 279.5 mm, height 64.5 mm, depth 62.5 mm.



Adjusting the arm height

The arm height can be adjusted (by a maximum of 14 mm) by moving the grooved spindle in a vertical direction.



Adjusting the closing speed and closing force

Separate adjustable closing and latching speed.

Closing force can be adjusted for different door sizes and weights



Sliding arms

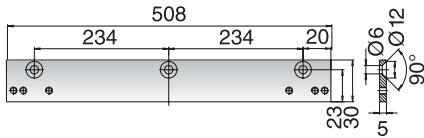


DC193

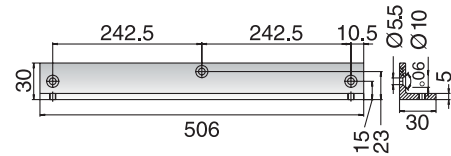


DC194

Accessories for arms



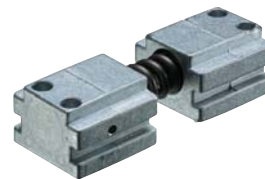
Mounting plate DC103



Mounting plate DC104

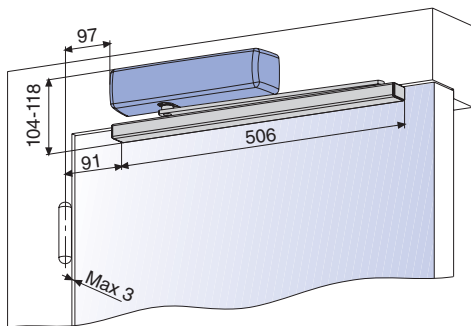
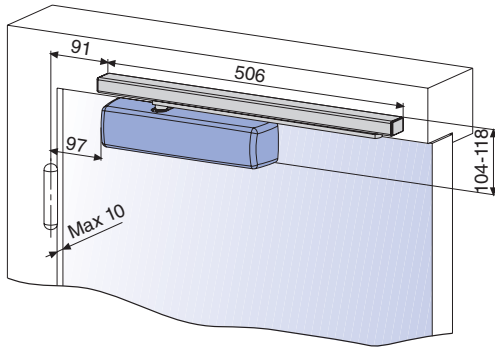


Hold open device DC152

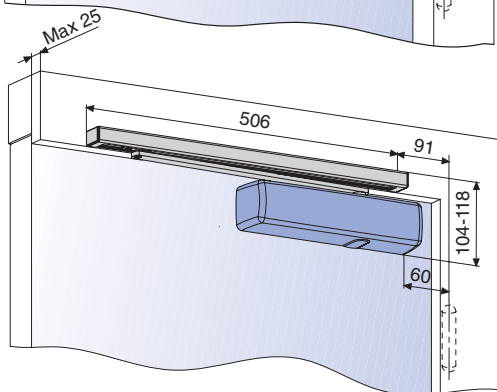
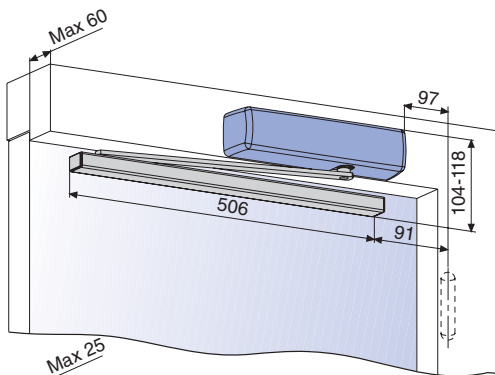


Opening damper DC153

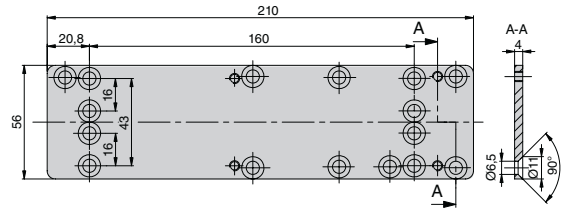
Opening side



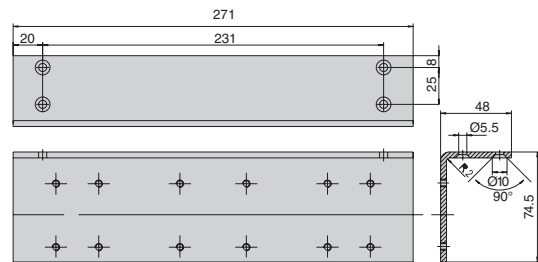
Closing side



Mounting plates

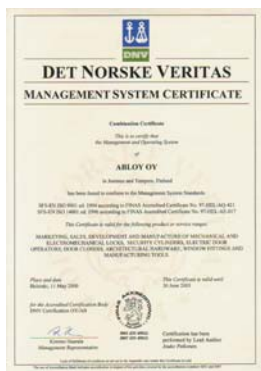


Straight mounting plate DC130



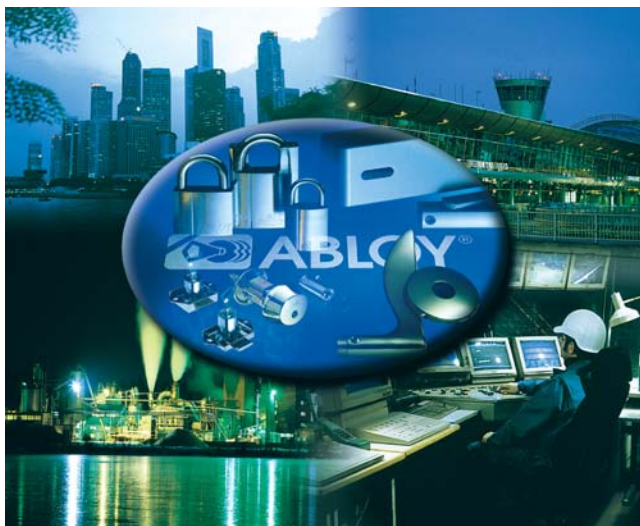
Angle mounting plate 7103

ABLOY® – the sign for security



The quality and environmental systems used by Abloy Oy guarantee that customers can be certain of **ABLOY®** quality in every field. We received our first Quality System Certificate - SFS-EN ISO 9001 - in 1989. Just eight years later, Abloy Oy was one of the first companies in Finland to be granted an SFS-EN-ISO 14001 Environmental System Certificate.

Our products are designed and manufactured not only to provide high levels of security, but also to be reliable, user-friendly and aesthetically pleasing. **ABLOY®** is your sign for security.



ABLOY® is a registered trademark of Abloy Oy, one of the leading manufacturers of locks, locking systems and architectural hardware and the world's leading developer of products in the field of electromechanical lock technology.

The unique **ABLOY®** detainer disc cylinder mechanism has several advantages over conventional locking mechanisms. Ever since its invention in 1907, it has been a symbol of high security and superior performance.

Our range consists of electromechanical locks, cam locks, padlocks, office furniture locks, rim locks, lock cases, cylinders for different types of mortice locks, door closers, door automatics and architectural hardware. **ABLOY®** locking solutions for every application are available from our world-wide network of distributors.

Customer-oriented development, combined with our long experience and extensive security expertise, mean that **ABLOY®** security solutions employ the very latest technology to meet your needs.



www.abloy.com

Abloy Oy
Wahlforsinkatu 20
P.O. Box 108
FI-80101 JOENSUU
FINLAND
Tel. +358 20 599 2501
Fax +358 20 599 2209



8802307 02/2006 5000 kpl, Multiprint Oy